



XHTML

*People
Friendly?*



4i



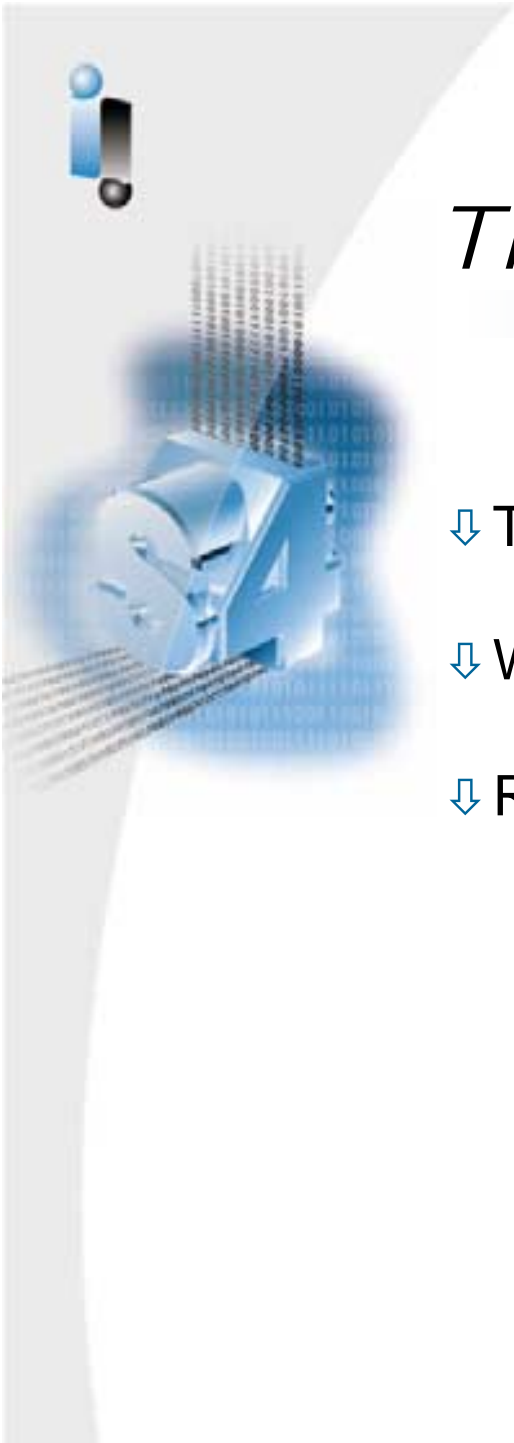
Who Am I?

↓ **Michel Vulpe**

– Chief Technology Officer & Founder of **i4i**

↓ i4i manufactures and sells XML based collaborative content solutions that lever the existing infrastructure

↓ Customers include **USPTO, Academic Press, CNC**



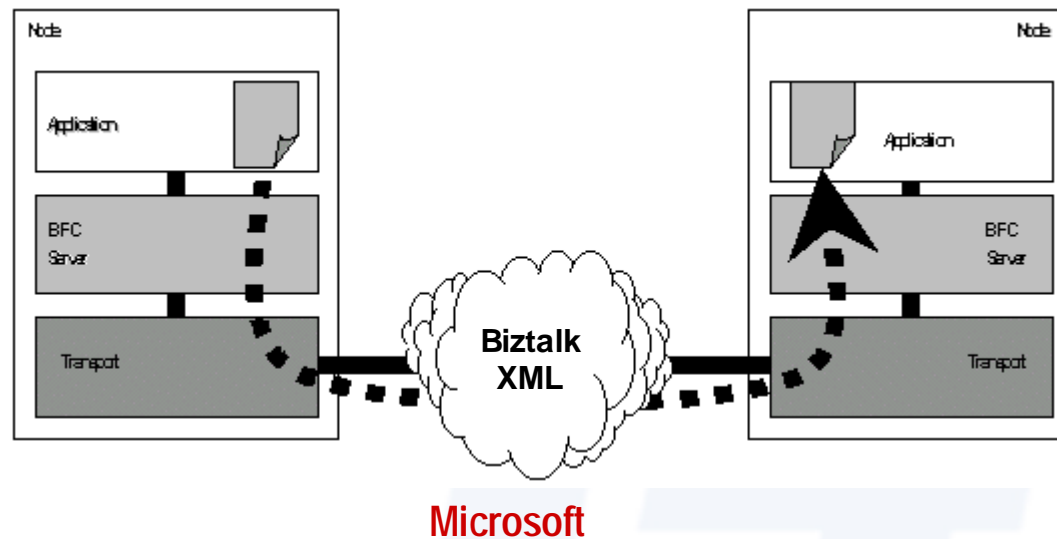
This presentation is about

- ↓ The role of XML in B2B
- ↓ What happens when people get involved
- ↓ Recommendations for the people side

i4i

B2B is M2M

**XML is the data interface for
M2M over the Internet**



B2B is driven by P2P

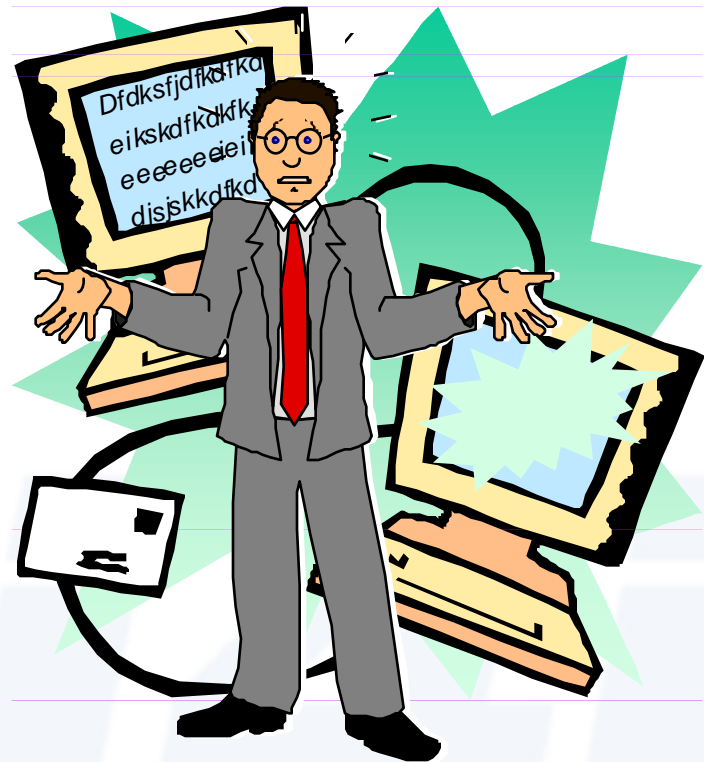


B2B is M2M & P2P



The Cyberspace Dilemma

It's really a
P2M world





This works for M2M

```
<?xml version="1.0"?><?xml-stylesheet href="article.xsl"
type="text/xsl"?><!DOCTYPE article SYSTEM "article.dtd" [
<!ENTITY figBikeTerm SYSTEM "biketerm.jpg" NDATA jpg>
<!ENTITY figHandlebar SYSTEM "handlebar.jpg" NDATA jpg>
<!ENTITY figToedInBreak SYSTEM "toedinbreak.jpg" NDATA jpg>
<!ENTITY figBreakTypes SYSTEM "breaktypes.jpg" NDATA jpg>
<!ENTITY figFrontCage SYSTEM "frontcage.jpg" NDATA jpg>
<!ENTITY figFrontTopView SYSTEM "frontTopView.jpg" NDATA jpg>
<!ENTITY figScrewLocations1 SYSTEM "screwLocations.jpg" NDATA jpg>
<!ENTITY figScrewLocations2 SYSTEM "screwLocations2.jpg" NDATA jpg>
<!ENTITY figBentWheel SYSTEM "bentwheel.jpg" NDATA jpg>
<!ENTITY figSqueezeSpokes SYSTEM "squeezeSpokes.jpg" NDATA
jpg>]
<articleId="a203">
<opening>
<title>OWNER MANUAL FOR EAGLE 2000 BICYCLE</title>
<copyright>Copyright 2000 Flying Bicycle Inc.</copyright>
<author>
<name>
<first.name>Joseph</first.name>
<last.name>Rameau</last.name>
</name>
<company>Flying Bicycles Inc.</company>
<address>1002 Raleigh Avenue, Tucson, AZ.</address>
<email>jrameau@fb.com</email>
</author>
<abstract>
<para>In this publication we describe the basic configuration procedures for the
<b><i>Eagle 2000</i></b> Bicycle. It seeks to cover the various inspection procedures
necessary for the <b><i>Eagle 2000</i></b>
```


This works for P2P

This works for P2M



```
<?xml version="1.0"?><?xml-stylesheet href="article.xsl"
type="text/xsl"?><!DOCTYPE article SYSTEM "artide.dtd"
[<!ENTITY figBikeTerm SYSTEM "biketerm.jpg" NDATA
jpg><!ENTITY figHandlebar SYSTEM "handlebar.jpg" NDATA
jpg><!ENTITY figToedInBreak SYSTEM "toedinbreak.jpg" NDATA
jpg><!ENTITY figBreakTypes SYSTEM "breaktypes.jpg" NDATA
jpg><!ENTITY figFrontCage SYSTEM "frontcage.jpg" NDATA
jpg><!ENTITY figFrontTopView SYSTEM "frontTopView.jpg"
NDATA jpg><!ENTITY figScrewLocations1 SYSTEM
"screwLocations.jpg" NDATA jpg><!ENTITY figScrewLocations2
SYSTEM "screwLocations2.jpg" NDATA jpg><!ENTITY
figBentWheel SYSTEM "bentwheel.jpg" NDATA jpg><!ENTITY
figSqueezeSpokes SYSTEM "squeezeSpokes.jpg" NDATA
jpg>]><articleId="a203"><opening><title>OWNER MANUAL FOR
EAGLE 2000 BICYCLE</title><copyright>Copyright 2000 Flying
Bicycle
Inc.</copyright><author><name><first.name>Joseph</first.name><las
t.name>Rameau</last.name></name><company>Flying Bicycles
Inc.</company><address>1002 Raleigh Avenue, Tucson,
AZ.</address><email>jrameau@fb.com</email></author><abstract><
para>In this publication we describe the basic configuration procedures
for the <bold><italic>Eagle 2000</italic></bold> Bicycle. It seeks to
cover the various inspection procedures necessary for the <bold>
<italic>Eagle 2000</italic>
```

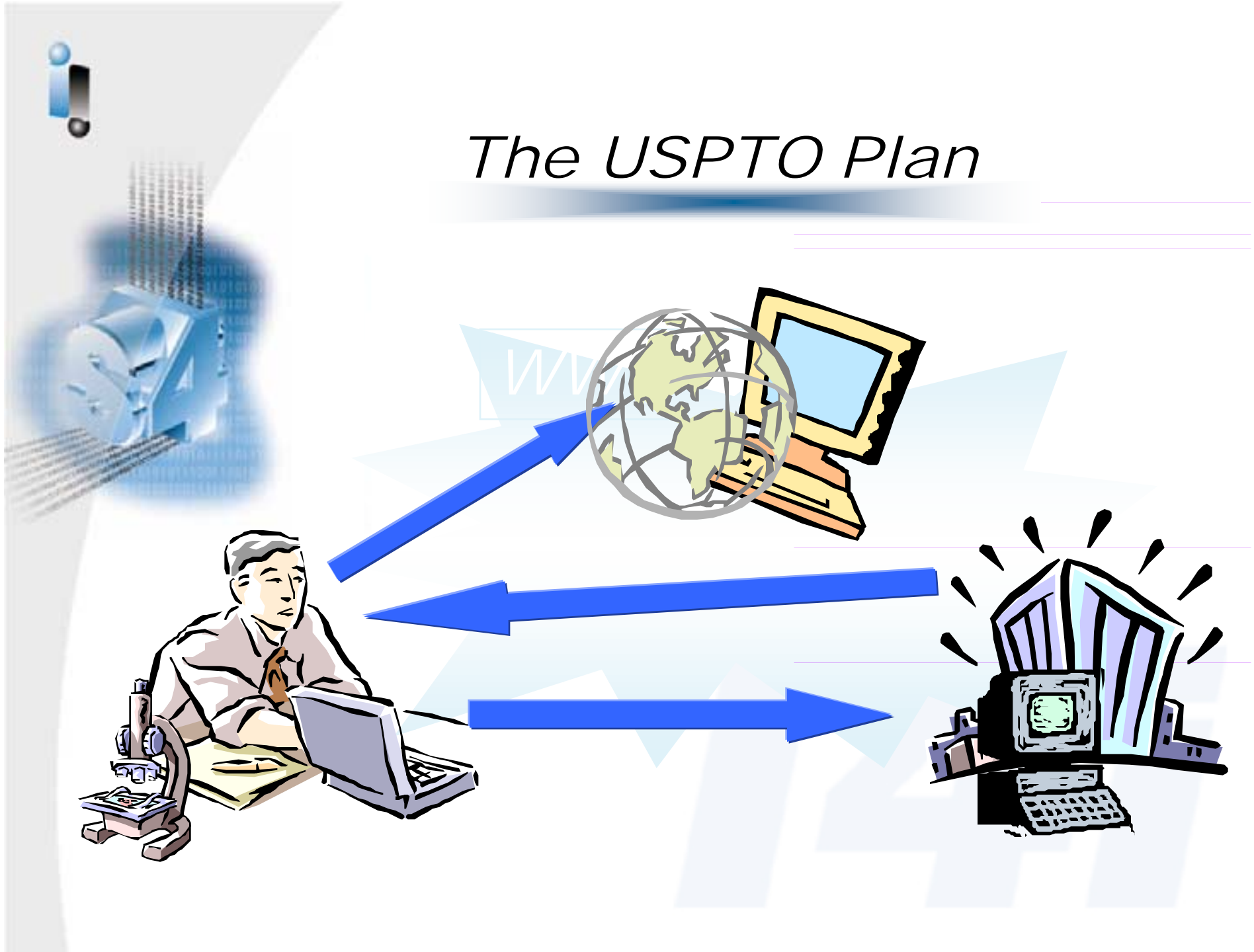


A Case Study of P2M

United States Patent and Trademark Office (USPTO)

- ↓ Processes 40% of world's patent and trademarked IP
- ↓ To remain competitive needs to reduce processing time by 50%
- ↓ Needs to reduce number of process steps it takes to get a patent application through

The USPTO Plan





XML?

- ↓ XML is one choice
- ↓ XML is a proven way reduce process steps
- ↓ XML is NOT a proven way to develop complex content on a mass scale

i4i

Working Assumptions

- ↓ Users care about their jobs
- ↓ Change is resisted
- ↓ TCO is a determining factor
 - must benefit users and the enterprise equally



141



Making XML people friendly

- ⇩ Focus on the user's job
- ⇩ Accept legitimate resistance to change
- ⇩ Eliminate the unnecessary
- ⇩ Simplify

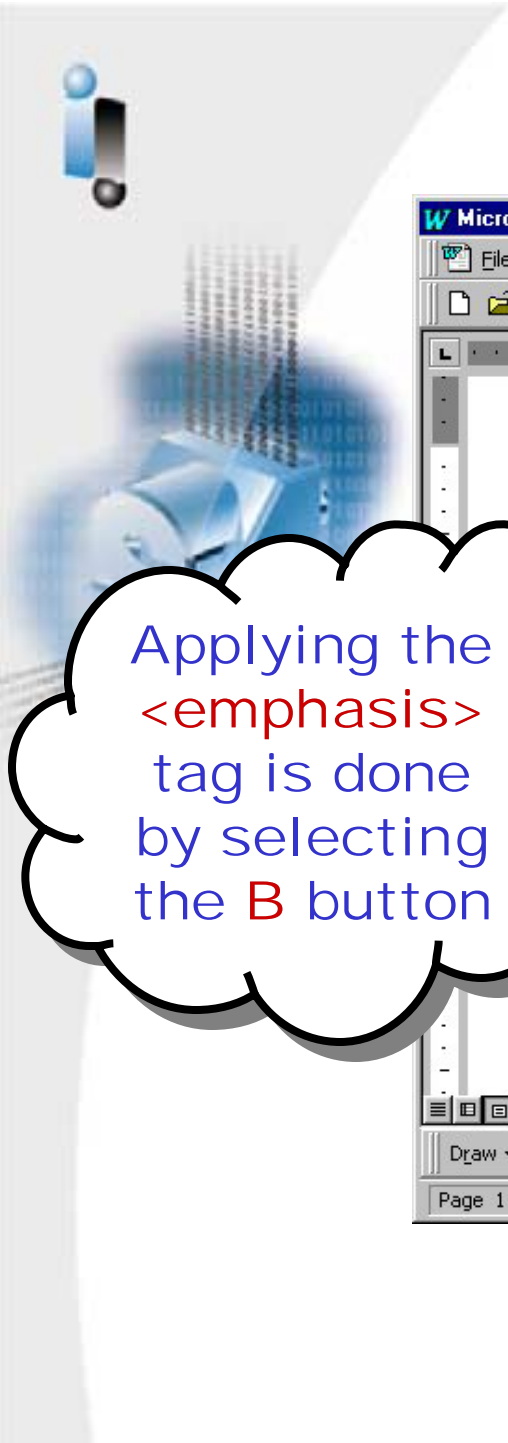
i4i



GUI

- ↓ Use standard content creation tools
 - the TCO of proprietary XML apps is too high
- ↓ Hide the XML
 - users don't care
- ↓ Support the user in doing a good job

i4i



Microsoft Word - C:\Program Files\i4i\PASAT\Sample Spec\TimExample1.xml

File Edit Insert View Tools Table Window Help

B x² x₂

1 2 3 4 5

SPECIFICATION

Electronic Version: [Electronic Version 1.1]

Reusable vinyl tape for securing hockey equipment externally

Brief Summary of the Invention

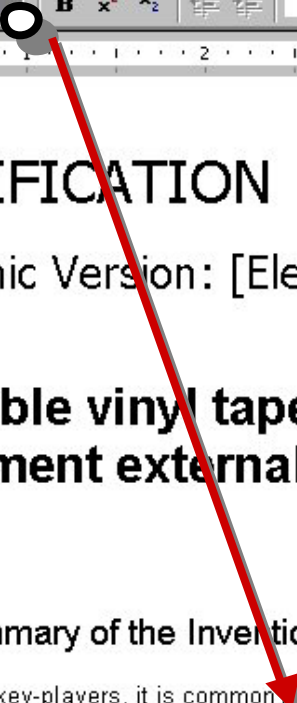
[0001] Among hockey-players, it is common practice to make use of disposable adhesive tape in order to secure protective leg pads against shifting of the equipment during play. The player applies a length of disposable adhesive athletic tape over the equipment to secure it to the leg. The amount of tape used for this purpose varies from player to player, but it is typical for



Page 1 Sec 1 1/3 At 4" Ln 10 Col 46

Draw AutoShapes

Applying the **<emphasis>** tag is done by selecting the **B** button





Simplify

- ↓ Map all formatting tags to formatting properties of the GUI tool
- ↓ Map keystrokes and function keys to tags wherever possible
- ↓ Its business process support
– not markup

i4i

Microsoft Word - C:\Program Files\i4i\NPASAT\Sample Spec\Example1.xml

File Edit Insert View Tools Table Window Help

Standard Paragraph Section

- Insert a Table Complex Work Unit
- Insert a Chemistry Complex Work Unit
- Insert a Math Complex Work Unit
- Insert List

OK

SPECIFICATION

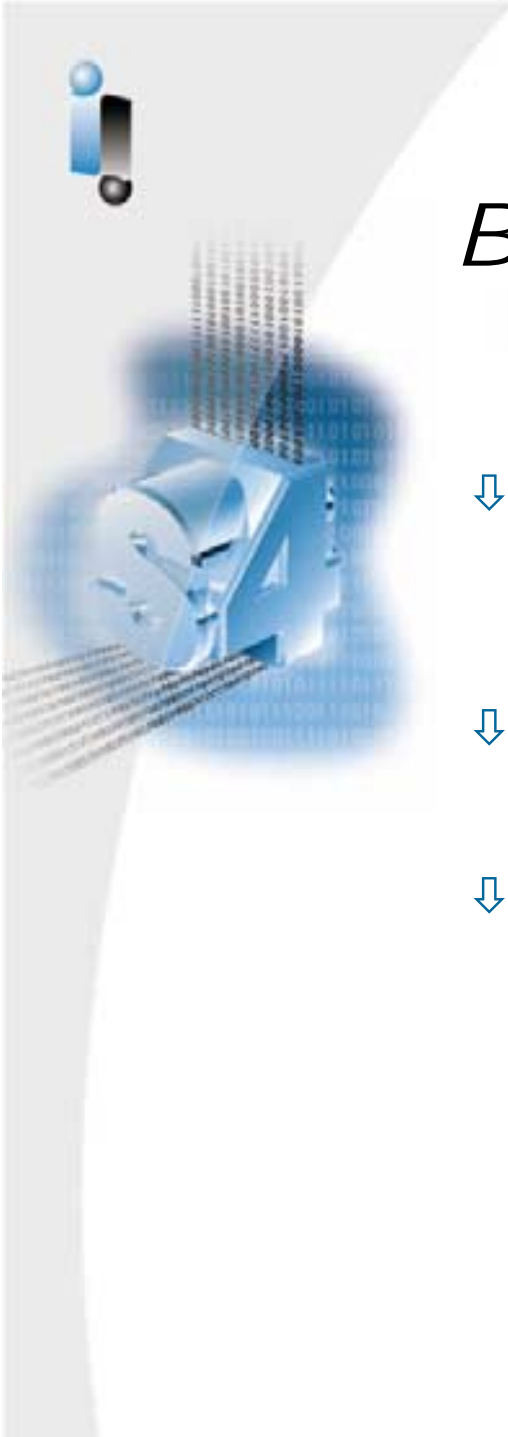
Electronic Version: [Electronic Version]

Reusable vinyl tape equipment externally

Brief Summary of the Invention

[0001] Among hockey-players, it is common practice in order to secure protective leg pads against the leg. A player applies a length of disposable adhesive tape to the leg. The amount of tape used for this purpose varies among players to use approximately half a roll of tape to secure the leg in two places: just below the knee and also, either just above, or just below the top of the

Provide meaningful guidance in "plain" language



Business Process Support

- ↓ Only expose the user to tags that cannot be handled by formatting or other means
- ↓ Present “tags” as business process issues
- ↓ Connect “tags” to business process support

i4i

It's not
<artwork>,
it's graphics
management
support

Microsoft Word - C:\Program Files\i4i\PASAT\Sample Spec\imExample1.xml

File Edit Insert View Tools Table Window Help

Figures

Figure Source :

Manage :

Move Up

Move Down

Add Above

Add Below

Remove

OK Cancel

Figures Section

The Section for all main figures

Manage figures

OK

Fig. 1

1

USE
ular lengths, so that it
ve athletic tape is
ectangular strip of vinyl
o match team uniforms,

Draw AutoShapes



Result - projected Year 1

- ↓ Patent Application Specification Authoring Tool is distributed to 30,000 lawyers, agents and inventors who can't spell XML but use Microsoft Word
- ↓ First patent application filed within 24 hours of PASAT being released

***B2B made possible
by P2M solution!***



Q: Can it be user friendly?

↓ **A: Yes** - *when applied with people in mind*



- *Simplify*
- *Give it a human interface*
- *Make the machine do the work*

141



Thank you

i4i wishes to thank those customers
and supporters who helped to
develop this presentation.

i4i